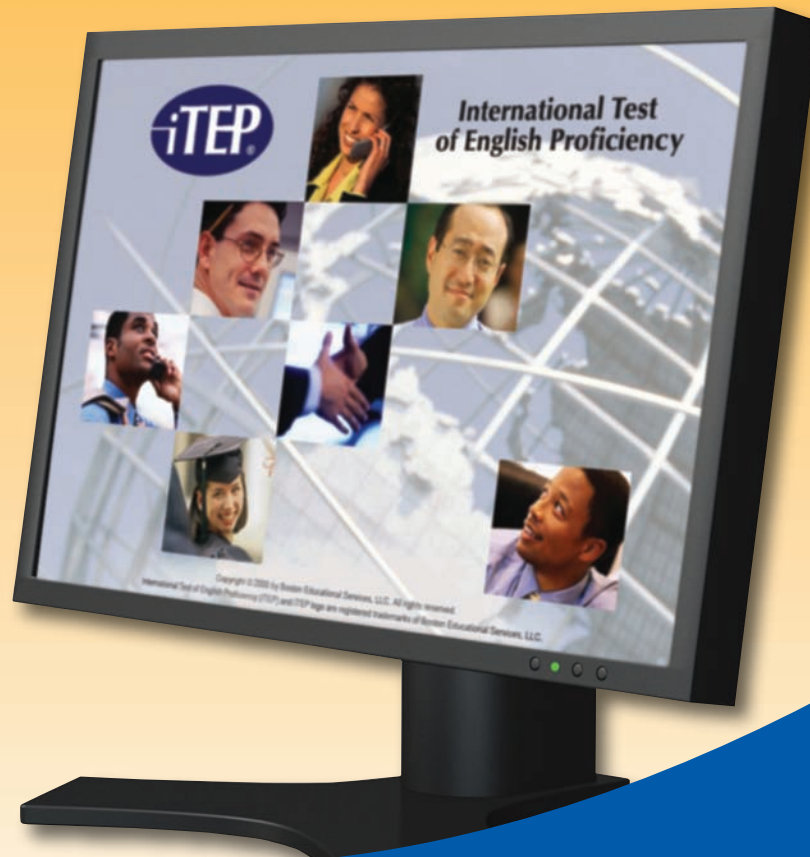


# ON-DEMAND, INTERNET-BASED ENGLISH LANGUAGE ASSESSMENT IN ONLY 90 MINUTES!



iTEP® — The Ideal Internet-Based English Language Evaluation Tool for:

- Universities
- Business and Industry
- English Language Institutes
- Government Agencies
- Professional Licensing Organizations

Developed by  
Boston Educational Services, LLC



## iTEP® Delivers Results

Take advantage of 21st century technology to bring a new level of accuracy, convenience, and efficiency to English language assessment.

Whether your need is for:

- university admission evaluation
- new-hire screening
- employee assignment qualification
- language course placement
- general-purpose proficiency assessment

iTEP delivers the results you need to make informed decisions.

▼  
*“iTEP demonstrates a high degree of statistical consistency and predictive validity. Its five sections are well structured to measure both an individual's overall proficiency, as well as his or her ability in each of the subject areas tested.”*

**Chet McCall, Jr., PhD**, Professor Emeritus, Practical Statistical Process  
Graduate School of Education and Psychology  
Pepperdine University

## iTEP's Special Features Give You an Edge

- Evaluation of all skills: Reading, Listening, Writing, Speaking, plus Grammar
- Full exam administered in only 90 minutes
- On-demand Internet delivery provides maximum scheduling flexibility
- Results available within 5 business days
- Affordably priced
- Writing and Speaking sections call for actual writing and speaking production
- Trained graders evaluate Writing and Speaking components
- Built-in software features help you manage test administration
- Multiple test forms ensure security
- A clear, informative Score Report
- Certified iTEP Test Centers located worldwide



*“The iTEP is a great alternative to the TOEFL®, TOEIC®, and IELTS® tests. This 90-minute, Internet-based exam is welcome proof that you can achieve accurate assessment of English proficiency in less time and at a significantly lower cost.”*

**John Katzman**, Founder of The Princeton Review

## Your Choice: iTEP Academic Or iTEP Business

Because we recognize that one size does not fit all, iTEP is available in two editions:

- **iTEP Academic** features settings, content, and vocabulary found in an educational environment.
- **iTEP Business** employs situations and terminology characteristic of the workplace.

Both **iTEP Academic** and **iTEP Business** provide assessment of all language skills, the convenience of Internet delivery, and the efficiency of a 90-minute exam.

The iTEP is recognized by the United States-based **Academic Credentials Evaluation Institute** for its accuracy and reliability.

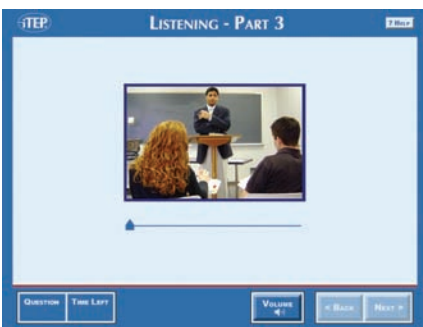


# English Proficiency Assessment

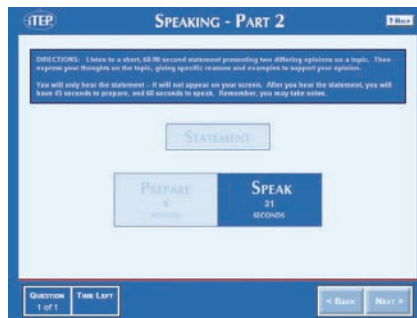


## Take a Peek Under the Hood

Although we would love to take you on a complete tour of the test, that's a bit difficult to do on paper. However, following are glimpses of a few actual test screens.



The **Listening** section incorporates both visual and audio cues.

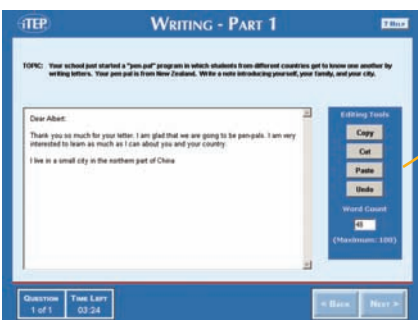


The **Speaking** component provides a topic, gives a brief preparation period, then records the examinee's spoken response.

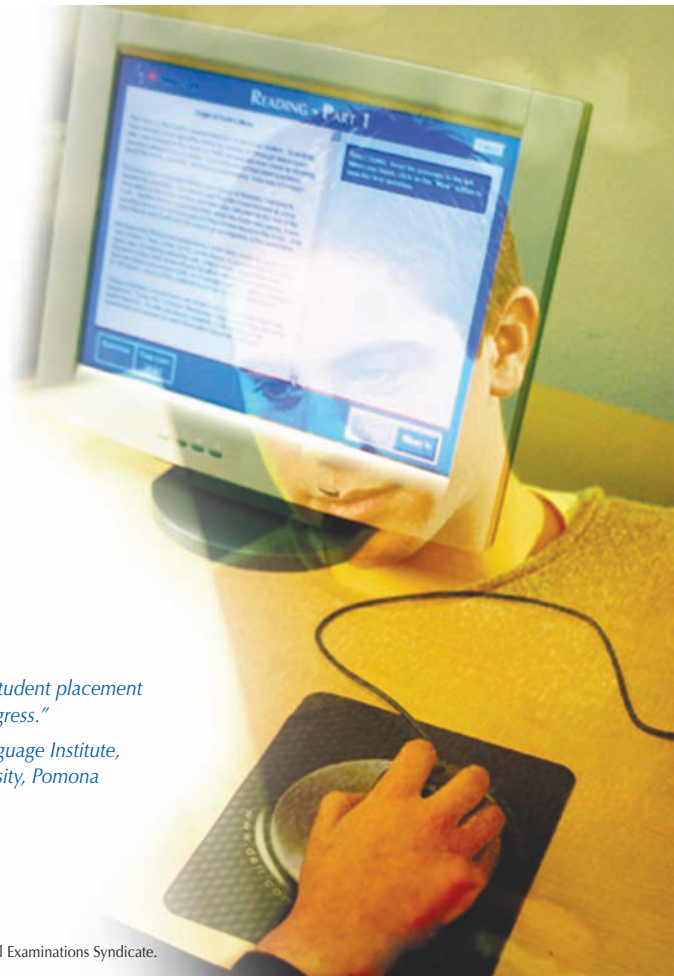
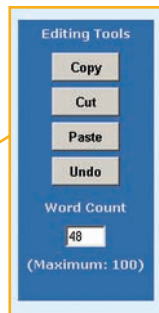
## Learn More

Further information about the iTEP, including a complete list of Certified iTEP Test Centers worldwide, can be found at:

[www.bostoneducational.com](http://www.bostoneducational.com)



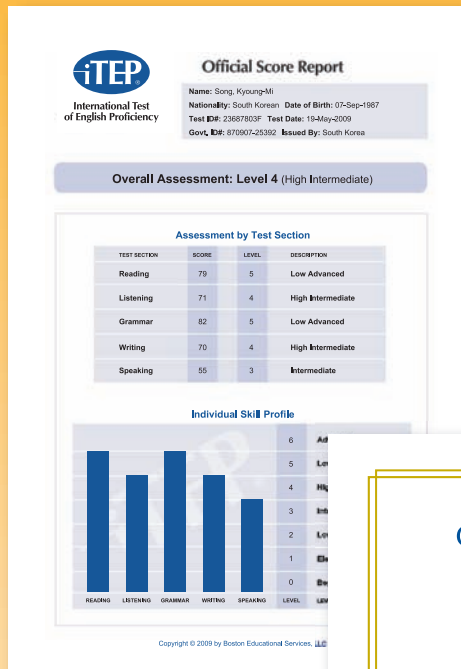
In the **Writing** section, iTEP provides examinees with a full set of editing tools.



*"iTEP is an excellent tool both for student placement and for measuring end-of-term progress."*

**James Hays**, Instructor, English Language Institute, California State Polytechnic University, Pomona

# MARKS OF ACCOMPLISHMENT



**iTEP**  
International Test of English Proficiency

**Official Score Report**

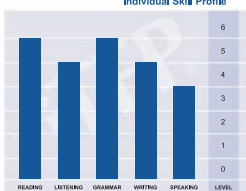
Name: Song, Kyung-Mi  
Nationality: South Korean Date of Birth: 01-Sep-1987  
Test ID#: 23687803F Test Date: 19-May-2009  
Govt. ID#: 87090725392 Issued By: South Korea

**Overall Assessment: Level 4 (High Intermediate)**

**Assessment by Test Section**

TEST SECTION	SCORE	LEVEL	DESCRIPTION
Reading	79	5	Low Advanced
Listening	71	4	High Intermediate
Grammar	82	5	Low Advanced
Writing	70	4	High Intermediate
Speaking	55	3	Intermediate

**Individual Skill Profile**



Copyright © 2009 by Boston Educational Services, LLC

The **iTEP® Official Score Report** presents examinees and sponsors with comprehensive test results on a single sheet of paper. The Report includes the overall assessment level, scores and assessment levels for each of the five areas tested, and a graphical “Individual Skill Profile” that shows an examinee’s relative strengths and weaknesses at a glance.



**iTEP**  
International Test of English Proficiency

**CERTIFICATE OF PROFICIENCY**

This is to Certify that  
**KYOUNG-MI SONG**  
has demonstrated English language skills at the  
**High Intermediate Level**  
on the International Test of English Proficiency  
06-September-2009 Seoul, Korea

**iTEP**

The iTEP is recognized by the Ministry of Education  
**ACADEMIC CREDENTIALS**  
EDUCATION RESEARCH

*J. J. Park*  
James M. Idris  
iTEP Co-Chairman, Managing Director

Please refer to the iTEP Official Score Report for detailed test results.

© 2009 Boston Educational Services, LLC

Examinees are eligible to receive this attractive, personalized certification of their overall performance on the iTEP.



We invite you to contact an iTEP® representative with any inquiries you may have:

**Boston Educational Services**  
6117 Reseda Blvd., Suite 200  
Reseda, CA 91335 USA

T +1-818-343-4448  
F +1-818-343-4446  
E [info@bostoneducational.com](mailto:info@bostoneducational.com)

For further, detailed information about the iTEP, please visit our web site at:

[www.bostoneducational.com](http://www.bostoneducational.com)

Developed by  
Boston Educational Services, LLC



© 2009 Boston Educational Services, LLC  
BES0809-CMD